



*YOU LIVE IT.*

We get it.

*WE GET IT.*

In the commercial world, you live and breathe the demands of your field. That's why at Delta®, we create solutions that address your specific needs. Whether you serve the healthcare, hospitality, education, or multi-family market, you're sure to find innovative faucets and showers from Delta that provide performance without breaking budgets. And efficiency without sacrificing experience.











A WaterSense® partner since the program's inception, Delta Faucet Company is proud to be the EPA's 2011 WaterSense Manufacturer Partner of the Year. Currently, over 80% of Delta's bath suites feature showerheads and handshowers that meet WaterSense requirements, using 20-40% less water than the industry standard\*. Our WaterSense labeled lavatories use 32% less\* water—and all perform as well or better than their less-efficient counterparts.

Delta® products also offer sustainability in the form of long-lasting durability—thanks to smart solutions like DIAMOND™ Seal Technology—as well as contributing to LEED® certification.



## How to use this catalog.

Look for these icons throughout the catalog to easily identify key features of our commercial products.

 = Proximity® Sensing Technology


 = H2Optics® Technology

 = HydroPower® Technology\*\*

 = DIAMOND™ Seal Technology


 = H2Okinetic™ Technology

 = WaterSense® Labeled Product

 = Water-Efficient Product  
Lavatory Faucets: flow rate of 1.5 gpm versus Industry Standard ASME A112.18.1/CSA B125.1 of 2.2 gpm and meet CALGreen standards.

Flush Valves: water closet flush valves of 1.27 gpf and urinal flush valves of .5 gpf versus Industry Standard ASME 112.2.

Showerheads and Handshowers: flow rate of 1.5 or 2.0 gpm versus Industry Standard ASME A112.18.1/CSA B125.1 of 2.5 gpm and meet CALGreen standards.

 = Compliant with State and Federal drinking water legislation.

\*Based on flow rate for showerheads and handshowers of 1.5 gpm or 2.0 gpm versus Industry Standard ASME A112.18.1/CSA B125.1 of 2.5 gpm; and flow rate for lavatory faucets of 1.5 gpm versus Industry Standard ASME A112.18.1/CSA B125.1 of 2.2 gpm.  
\*\*Available on some battery-operated models.





## TABLE OF CONTENTS

**WATERSENSE® PARTNER OF THE YEAR . . . 4**

**SMART SOLUTIONS FOR SMART FACILITIES 6**

**PROXIMITY FAUCETS . . . . . 8**

### **LAVATORY FAUCETS**

Lavatory faucets – Electronic . . . . . 10

Lavatory faucets – Single-handle . . . . . 12

Lavatory faucets – Two-handle . . . . . 14

Lavatory faucets – Metering . . . . . 16

### **FLUSH VALVES**

Flush valves – Electronic . . . . . 18

Flush valves – Manual . . . . . 20

### **HEALTHCARE SPECIALTIES**

Surgeon scrub up . . . . . 24

General surgeon scrub up . . . . . 25

Laboratory . . . . . 26

Bedpan cleansers . . . . . 27

### **GENERAL SINK FAUCETS**

Sink faucets – Single-handle . . . . . 30

Sink faucets – Two-handle . . . . . 32

Sink faucets – Wall mount . . . . . 34

**BATH ACCESSORIES . . . . . 36**

**MULTICHOICE® UNIVERSAL . . . . . 38**

**TUB AND SHOWER . . . . . 40**

**SHOWERHEADS AND DRAINAGE . . . . . 42**

**WEB . . . . . 43**

Delta Commercial Technical Service  
800.387.8277

## SMART SOLUTIONS FOR SMART FACILITIES.



### Proximity® Sensing Technology.

For the most responsive electronic faucets in the industry, look no further than Delta® faucets featuring Proximity Sensing Technology, the next generation in hands-free functionality. Proximity Sensing Technology enables one to turn on the water simply by placing a hand near the faucet spout. The entire faucet body acts as a sensor, responding when activated. There are no optics or infrared to maintain. Consider Proximity Sensing Technology for an all-around responsive faucet experience.

### H<sub>2</sub>Optics® Technology.

Delta electronic faucets and flush valves with H<sub>2</sub>Optics Technology operate consistently, time after time, regardless of interference factors such as dark clothing or lighting conditions. All electronic faucets and flush valves featuring H<sub>2</sub>Optics Technology are water-efficient\*—contributing to LEED® certification.

\*Water-Efficient Product—Lavatory faucets: flow rate of 1.5 gpm versus Industry Standard ASME A112.18.1/CSA B125.1 of 2.2 gpm.  
Flush valves: water closet flush valves of 1.27 gpf and urinal flush valves of .5 gpf versus Industry Standard ASME 112.2.

### Battery Backup.

Battery backup allows hardwire units to continue operating during power outages, by switching to power from a 9-Volt battery until power is restored. Now available with the following Delta series: 590-HDF, 590LF, 590-P, 590T, 590TP, 591T, 591TP, 600T, 860T, 1500T, 3000T, 81THW and HWA, and 1600T.







## H<sub>2</sub>Okinetic™ Technology.

By combining luxury and efficiency, H<sub>2</sub>Okinetic Technology delivers a truly unique shower experience. Its kinetic wave pattern and large droplets that retain their heat create the feeling of more water, without using more water. In fact, H<sub>2</sub>Okinetic showerheads feel like a full flow 2.5 gpm, but actually operate at 1.5 or 2.0 gpm—which can result in a 36% decrease\*\* in water usage compared to a high-flow system and help contribute points toward LEED® certification.

\*\*Based on flow rate for showerheads of 1.5 gpm or 2.0 gpm versus Industry Standard ASME A112.18.1/CSA B125.1 of 2.5 gpm.



## DIAMOND™ Seal Technology.

Long faucet life is crucial in keeping maintenance hassles and building operating costs at a minimum. DIAMOND Seal Technology utilizes a diamond-coated ceramic cartridge, built to last up to 10 times longer than the industry standard.† And once inside the faucet, water is not in contact with metal contaminants.

†Industry standard based on ASME A112.18.1 of 500,000 cycles.

## MultiChoice® Universal.

One rough. Unlimited possibilities. MultiChoice Universal provides the flexibility to upgrade the style or functionality of showers without altering the plumbing behind the wall. Saves time and hassle—streamlining the whole plumbing and installation process while eliminating the opportunity for the wrong valve in the wall. More refined temperature limit stop allows temperatures to be set more precisely. Plus, multiple connection options and a high-flow rough for shower-only configurations only add to the valve's flexibility.



## PROXIMITY® SENSING TECHNOLOGY

### A New Take on Hands-Free

Requires no optics or infrared sensors; the whole faucet body acts as a sensor.

600T040







Single-Hole Arzo® with Proximity Sensing Technology  
600T040 – 1.5 gpm  
600T050 – 0.5 gpm

- Hardwire operation
- Battery option available
- Cast brass body
- No anti-rotational pin
- Surface-mounted control box
- Optional 4" decorative coverplate



Single-Hole Grail® with Proximity Sensing Technology  
610T040 – 1.5 gpm  
610T050 – 0.5 gpm

- Hardwire operation
- Battery option available
- Cast brass body
- No anti-rotational pin
- Surface-mounted control box
- Optional 4" decorative coverplate



Single-Hole High-Rise Faucet with Proximity Sensing Technology  
590TP0120

- Hardwire operation
- Battery option available
- Cast brass body
- Anti-rotational pin
- 1.5 gpm laminar outlet
- Surface-mounted control box
- Optional 4" or 8" forged coverplate



3-Hole 4" Centerset Faucet with Proximity Sensing Technology  
591TP0250

- Hardwire operation
- Battery option available
- Cast brass body
- 0.5 gpm spray outlet
- Surface-mounted control box



Single-Hole High-Rise Faucet with Proximity Sensing Technology  
590-PLGHDFHW

- Hardwire operation
- Battery option available
- Metal construction
- Anti-rotational pin
- 0.5 gpm spray outlet
- Surface-mounted control box
- Optional 4" or 8" coverplate



Hardwire models are also available with the battery backup option referenced on page 6.

For additional information on the models shown above, as well as other available models, please go to [www.specselect.com](http://www.specselect.com).

## ELECTRONIC LAVATORY FAUCETS



### Durable Performance

Hands-free functionality durable enough to withstand a wide variety of commercial applications.

590T1120



3-Hole 4" Centerset Faucet  
591T1220

- Featuring H2Optics® Technology
- Cast brass body
- Battery operation
- Adjustable run time and distance setting
- Hardwire option available
- 1.5 gpm vandal-resistant laminar outlet



Single-Hole High-Rise Faucet  
590T1120

- Featuring H2Optics Technology
- Cast brass body
- Battery operation
- Anti-rotational pin
- Adjustable run time and distance setting
- Available in 4" and 8" configurations
- Hardwire option available
- 1.5 gpm vandal-resistant laminar outlet



Single-Hole Faucet  
590-LGHGMHDF

- Featuring H2Optics Technology
- Battery operation
- Metal construction
- Anti-rotational pin
- 0.5 gpm vandal-resistant spray outlet
- Obsolete Q4 2012



Hardwire models for the 590T, 591T, 590-HDF, 590LF-HDF, 591-HDF and the 591LF-HDF series are also available with the battery backup option referenced on page 6.





**Single-Hole Faucet  
590LF-LGHGMHDF**

- Featuring H2Optics Technology
- Battery operation
- Metal construction
- Anti-rotational pin
- 0.5 gpm vandal-resistant spray outlet
- Available Q3 2012



**3-Hole 4\"/>**

- Featuring H2Optics Technology
- Battery operation
- Metal construction
- 0.5 gpm vandal-resistant spray outlet
- Obsolete Q4 2012



**3-Hole 4\"/>**

- Featuring H2Optics Technology
- Battery operation
- Metal construction
- 0.5 gpm vandal-resistant spray outlet
- Available Q3 2012



**Single-Hole Electronic Soap Dispenser  
DESD-550 – All-cast body  
DESD-250 – Non-metal version**

- Solid machined shank with low profile spout
- Standard 800 ml soap bottle
- Fits on decks up to 2" thick
- LED indicators: Yellow = low battery, Red = low soap
- Hardwire kit available



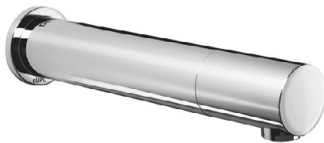
**Single-Hole Faucet  
DEMD-301**

- Battery operation
- Pre-mixed water
- Adjustable maximum run time
- Adjustable sensor range
- No anti-rotational pin
- Optional 4" forged coverplate available
- Hardwire kit available
- Remote control available (060967A)
- 0.5 gpm outlet



**Single-Hole Faucet with Side Mixer  
DEMD-311**

- Battery operation
- Side mixer to adjust water temperature
- Adjustable maximum run time
- Adjustable sensor range
- No anti-rotational pin
- Optional 4" forged coverplate available
- Hardwire kit available
- Remote control available (060967A)
- 0.5 gpm outlet



**Concealed Wall Mount Faucet  
DEMD-402 – 8" spout  
DEMD-404 – 6" spout**

- Adjustable maximum run time
- Hardwire operation only
- Tempered water supply
- Adjustable sensor range
- Remote control available (060967A)
- 0.5 gpm outlet



**Single-Hole Faucet  
DEMD-101**

- Battery operation
- Above-deck solenoid and battery
- Vandal-resistant wrench flat spray outlet
- Model with side mixer: DEMD-111



**Single-Hole Faucet with Side Mixer  
DEMD-211**

- Hardwire operation
- Vandal-resistant wrench flat spray outlet
- Model without side mixer: DEMD-201



## SINGLE-HANDLE LAVATORY FAUCETS

### Ceramic Disc Technology

Smooth operation makes this washerless faucet low-maintenance. The volume and temperature control is integrated so the faucet can be turned on in the same position as it was turned off for consistent temperature setting.

### Longer Reaching Spout

Provides a 5-3/4" reach compared to the industry standard of 4". This reduces the chance of the user's hands touching the back of the sink and the amount of water pooling on the counters.

### Water-Efficient Outlet

Available in four optional reduced-flow outlets, ranging from 0.5 gpm to 1.5 gpm.

### Solid Cast Brass Body

Construction of this 4-pound faucet offers little opportunity for bacteria to collect and makes cleaning easy.







**4" Centerset Faucet  
22C101**

- Cast brass body
- Vandal-resistant lever handle and 1.5 gpm outlet
- Ceramic disc technology
- Rotational limit stop



**4" Centerset Faucet  
501LF-HGMHDF**

- Vandal-resistant lever handle and 0.5 gpm outlet
- Adjustable handle limit stop
- Diamond-embedded ceramic disc cartridge
- .35 gpm available: 501LF-TGMHDF



**4" Centerset Faucet  
515LF-HDF**

- Includes metal pop-up lever
- Vandal-resistant 6" elbow handle and 1.5 gpm outlet
- Adjustable handle limit stop
- Diamond-embedded ceramic disc cartridge



**Single-Hole Faucet  
22C631**

- Cast brass body
- Vandal-resistant lever handle and 1.5 gpm outlet
- Ceramic disc technology
- Rotational limit stop



**4" Centerset Faucet  
22C131  
22C331 – With metal pop-up**

- Cast brass body
- Vandal-resistant lever handle and 1.5 gpm outlet
- Ceramic disc technology
- Rotational limit stop



**Single-Hole Faucet  
570-WFHDF**

- 4" swing spout
- Vandal-resistant lever handle and 2.2 gpm outlet
- Stainless steel ball with high temperature limit stop
- 1.5 gpm 570LF-WFHDF: Available Q4 2012



**Widespread Single Control Faucet  
24T2643**

- Vandal-resistant 6" elbow lever handle
- Stainless steel ball with high temperature limit stop
- 4" to 16" adjustable centers
- 1.5 gpm outlet



For additional information on the models shown above, as well as other available models, please go to [www.specselect.com](http://www.specselect.com).

## TWO-HANDLE LAVATORY FAUCETS

### Seamless Brass Spout

Compared to traditional tubular spouts on the market, this spout boasts a .09" wall thickness which provides superior force and vandal resistance.

### Smooth-End Spout

This maintenance-free laminar flow outlet has the flow control located in the base of the spout, and the chrome-plated smooth end eliminates crevices for bacteria to form.

### Limited Swing Gooseneck

Available in three variations and multiple sizes, this option limits movement of the spout to a maximum 120° rotation.

### 4" Blade Handles with Sanitary Hood

These vandal-resistant handles are designed to help prevent the growth of bacteria. The sanitary hood feature provides significantly less areas for bacteria to collect.







**6"-12" Widespread Faucet  
23C674-LS**

- Vandal-resistant 4" blade handles with sanitary hood
- Laminar flow control smooth-end spout (1.1 gpm)
- CER-TECK® cartridge



**6"-16" Widespread Faucet  
3579-WFLGHDF**

- Vandal-resistant wrist blade handles
- 1.5 gpm outlet
- Rigid gooseneck spout
- 3579LF-WFLGHDF: Available Q4 2012



**6"-12" Widespread Faucet  
23C642**

- Vandal-resistant 4" hooded blade handles
- CER-TECK cartridge
- 1.5 gpm outlet
- Rigid/swivel gooseneck spout



**4" Centerset Faucet  
21C142**

- Cast brass body
- Vandal-resistant 4" hooded blade handles
- CER-TECK cartridge
- 1.5 gpm outlet



**6"-12" Widespread Faucet  
23C333**

- Vandal-resistant 3" hooded lever handles and 1.5 gpm outlet
- CER-TECK cartridge



**4" Centerset Faucet  
2529LF-LGHGMHDF**

- Vandal-resistant wrist blade handles
- 0.5 gpm outlet



**4" Centerset Faucet  
21C143**

- Cast brass body
- Vandal-resistant 3" hooded lever handles
- CER-TECK cartridge
- 1.5 gpm outlet



For additional information on the models shown above, as well as other available models, please go to [www.specselect.com](http://www.specselect.com).

## METERING LAVATORY FAUCETS

### Cast Brass Body

Construction of this faucet offers little opportunity for bacteria to collect and makes cleaning easy.

### Water-Efficient Outlet

Comes standard with a 0.5 gpm flow rate. Each handle is set not to exceed a flow of 0.25 gallons per activation.

### Adjustable

Easily adjust the run time to match your water pressure.

### ADA Tip Action Lever Handles

Offer ease of use and meet ADA standards—a feature not typically offered in metering faucets.







**4" Centerset Faucet  
86T1153**

- Cast brass body
- Vandal-resistant tip action lever handles and outlet
- Adjustable close time



**Single-Hole Faucet  
87T104**

- Cast brass body
- Vandal-resistant push-style handle and outlet
- Adjustable close time



**Single-Hole Faucet  
87T105**

- Cast brass body
- Vandal-resistant tip action lever handle and outlet
- Adjustable close time



**Single-Hole Faucet  
701-HDF**

- Vandal-resistant push-style handle and outlet
- Adjustable close time
- 701LF-HDF: Available Q4 2012



**4" Centerset Faucet  
2507-HDF**

- Vandal-resistant push-style handles and outlet
- Adjustable close time
- 2517LF-HDF: Available Q4 2012



## ELECTRONIC FLUSH VALVES + OPTIONS

### Easy to Install and Adjust

Right out of the box, the batteries are already installed and setup is a breeze with adjustable settings.

### Vandal Resistant

All metal heavy-duty construction. Chloramine-resistant diaphragm.

### Cost-Effective, Hands-Free Upgrade for Your Manual System

Retrofit an electronic flush valve onto an existing manual unit with a simple kit.



81T201HWA – Hardwire | 81T201BTA – Battery



**Exposed Electronic Flush Valve**  
81T201-WMSHW – For water closet (hardwire)  
81T231-WMSHW – For urinals (hardwire)

- Featuring H<sub>2</sub>Optics® Technology
- Chloramine-resistant diaphragm
- Electronic manual override button
- Vandal-resistant stainless steel cover



**Electronic Urinal Flush Valve**  
81T231HWA – Hardwire  
81T231BTA – Battery

- Featuring H<sub>2</sub>Optics Technology
- Volume control, field adjustable
- Chloramine-resistant diaphragm
- Metal manual override button
- Replaceable lens window



**Electronic Water Closet Flush Valve**  
81T201HWA – Hardwire  
81T201BTA – Battery

- Featuring H<sub>2</sub>Optics Technology
- Volume control, field adjustable
- Chloramine-resistant diaphragm
- Metal manual override button
- Replaceable lens window







**Concealed Electronic Washdown Urinal**  
**1600T9001RI – Rough-in (hardwire)**  
**1600T9001TR – Trim (hardwire)**

- Featuring H2Optics Technology
- Electronic manual override button
- Vandal-resistant stainless steel cover
- Available in various rough-in and trim options
- Factory plumbed for easy installation



**Concealed Electronic Flush Valve**  
**1600T6103RI – Rough-in (hardwire)**  
**1600T6103TR – Trim (hardwire)**

- Featuring H2Optics Technology
- Electronic manual override button
- Water closet and urinal models available
- Vandal-resistant stainless steel cover
- Available in various rough-in and trim options
- Factory plumbed for easy installation



**Side Mount Electronic Flush Kit**  
**DEFM-100**

- Retrofit model
- For use on 81T Teck® exposed manual flush valves and 86T metering washdown urinals
- Can also be used on Sloan®, Zurn® and Crane models
- Courtesy manual flush button
- Batteries included



**Electronic Flush Retrofit Kit for Delta® Valves**  
**81T201BTA-20 – Battery (water closet)**  
**81T201HWA-20 – Hardwire (water closet)**

- Retrofit model
- Featuring H2Optics Technology
- Complete valve less stop, cover tube and wall flange
- Chloramine-resistant diaphragm
- Metal manual override button
- Replaceable lens window



**Electronic Flush Retrofit Kit**  
**81TWCBTRKA – Water closet**  
**81TURBTRKA – Urinal**

- Retrofit model
- Featuring H2Optics Technology
- Battery operation
- Converts manual exposed flush valves to electronics
- New diaphragm, seat and filter screen included
- For hardwire kit, order 061069A
- Replaceable lens window



**Electronic Flush Retrofit Kit for Sloan/Zurn Valves**  
**81T231BTA-30 – Battery (water closet)**  
**81T231HWA-30 – Hardwire (water closet)**

- Retrofit model
- Featuring H2Optics Technology
- Complete valve less stop with modified tail to fit Sloan/Zurn stop
- Chloramine-resistant diaphragm
- Metal manual override button
- Replaceable lens window



**Electronic Washdown Urinal Valve**  
**DEMD-86505**

- Battery operation
- Adjustable sensor range
- Adjustable flow time
- Remote control available



Hardwire models are also available with the battery backup option referenced on page 6.

For additional information on the models shown here, as well as other available models, please go to [www.specselect.com](http://www.specselect.com).

## MANUAL FLUSH VALVES



### Features of the Delta® Flush Valve:

- Non-hold open handle
- Chloramine-resistant diaphragm
- Easily adjustable settings
- All metal heavy-duty construction
- Optional trap seal primer
- Constant peak flow







**Water Closet Flush Valve  
81T201**

- Chloramine-resistant diaphragm
- ADA vandal-resistant non-hold open handle
- Factory set 1.0 U.S. gallons flush at 60 psi
- Field adjustable



**Urinal Flush Valve  
81T231**

- Chloramine-resistant diaphragm
- ADA vandal-resistant non-hold open handle
- Factory set 0.5 U.S. gallons flush at 60 psi
- Field adjustable



**Metering Washdown Urinal Valve  
86T505**

- ADA vandal-resistant handle
- Back inlet stop for 1/2" supply



For additional information on the models shown above, as well as other available models, please go to [www.specselect.com](http://www.specselect.com).

*SOLUTIONS THAT WORK HARD*

to make your job

After decades of experience in serving the needs of the healthcare industry, we understand the unique issues of this ever-changing market. And we're committed to delivering the most innovative and reliable solutions that make it easier to get things done—so you can focus on what you do best.







easier.

STER



## SURGEON SCRUB UP



3000T3370A with 24T3003



**Electronic Wall Mount Faucet  
1501T4670**

- Featuring H<sub>2</sub>Optics® Technology
- Wall mount rigid gooseneck spout with integral sensor in base
- Adjustable sensing range and time out
- Battery operation
- Smooth-end spout with 1.5 gpm laminar flow



**Electronic Deck Mount Faucet  
1501T3370**

- Featuring H<sub>2</sub>Optics Technology
- Laminar 1.5 gpm flow control smooth-end rigid spout
- Adjustable sensing range and time out
- Battery operation
- Single-hole model—also available in 4" and 8" options



**Electronic Deck Mount Faucet  
3001T3420A**

- Featuring H<sub>2</sub>Optics Technology
- Control module with LCD screen—six programmable settings
- Battery operation
- 4" model—also available in single-hole and 8" options
- Rigid spout with 1.5 gpm vandal-resistant laminar outlet





**Above Deck Mixing Valve for 1500T & 3000T Models  
24T3003**

- Single-control mixing valve
- Vandal-resistant 6" elbow handle
- Stainless steel ball



**3000T Series Touch Pad Control Module with LCD Screen (Standard with 3000T Series Products)**

#### Adjustable Settings

- Run time—length of time water runs after user removes hands from sensing zone.
- Sense time—response time for sensor to react to hands placed in sensing zone.
- Block time—time required between uses; prevents faucet from running water excessively.
- Sensor range—distance at which sensor detects hands in wash area.
- Auto timer—length of time before faucet stops running in the event the sensor is obstructed by foreign object.
- Metering mode—allows for continuous flow for a set amount of time.
- Self tests for troubleshooting.
- Supplies diagnostic usage information.



**3-Position Switch  
(060651A or -KS Suffix with 3000T Products)**

- Designed so healthcare facilities can continue to follow infectious control procedures.

#### Switch Settings

- ON** – Solenoid goes into continuous run so water lines can be flushed with high-temperature water.
- Do not exceed 71° C (160° F) during flushing of lines as higher temperatures may damage sensor components.
- AUTO** – Faucet functions according to regular settings.
- OFF** – Solenoid is blocked from operating so cleaning staff can clean sink without faucet operating.

## GENERAL SURGEON SCRUB UP



**Surgeon Scrub Faucet  
54T5432A**

- Floor mount self-close double foot pedal valve
- Deck mount rigid/swivel gooseneck spout
- Vandal-resistant 1.5 gpm laminar with Agion® antimicrobial outlet
- Slow close version available as special order



**Surgeon Scrub Faucet  
54T5332A**

- Wall mount self-close double foot pedal valve
- Deck mount rigid/swivel gooseneck spout
- Vandal-resistant 1.5 gpm laminar with Agion® antimicrobial outlet
- Slow close version available as special order



For additional information on the models shown above, as well as other available models, please go to [www.specselect.com](http://www.specselect.com).



## LABORATORY

Services available for ball valves and needle valves:

- Air
- Argon
- Carbon Dioxide
- Cold Water
- Helium
- Hydrogen
- Natural Gas
- Nitrogen
- Propane
- Vacuum

Refer to [www.specselect.com](http://www.specselect.com) for Valve/Service combination availability.



W6635DW



Single Shank Deck Mount  
Mixing Faucet  
W6760-9

- In-line vacuum breaker
- Nozzle outlet
- Maximum 1.5" diameter deck hole



Deck Mount Mixing Faucet  
W6700-9

- In-line vacuum breaker
- Nozzle outlet
- 2-hole installation



Deck Mount Single  
Water Valve  
W6600-10

- Angle vacuum breaker
- Nozzle outlet



Deck Mount Turret  
W6210GAS

- Single ball valve hose cock
- Available in multi-valve configurations for deck and wall mount



Deck Mount Turret  
W6220GAS

- Two ball valve hose cocks at 90°



Pure Water Faucet  
W6635DW

- Self-close Celcon® valve
- Gooseneck spout with Tygon® liner



## BEDPAN CLEANSERS



54T1104



**Concealed Wall Mount  
Bedpan Cleanser**  
53T5547

- Spout with double check vacuum breaker
- Reinforced hose and hanger
- Insulated handle on wand
- Spray outlet with stop
- Single-handle mixing control valve



**Wall Mount Double Foot Pedal  
Valve Bedpan Cleanser**  
54T1434A

- Wall-mounted vacuum breaker
- Reinforced hose and hanger
- Insulated handle on wand
- Spray outlet with stop



**Wall Mount Bedpan Cleanser**  
54T1104

- Reinforced hose and hanger
- Insulated handle on wand
- Spray outlet with stop
- Double check vacuum breaker



*UNIVERSAL DESIGN.*

# Universal appeal

When it comes to products with ease-of-use and overall accessibility, Delta® provides the ultimate in selection. From wall mount faucets to bath accessories, you'll find a wide variety of styles, designs, and configurations that meet a broad spectrum of regulations, while still addressing the specific needs of your facility.









## SINGLE-HANDLE GENERAL SINK FAUCETS

### ADA-Compliant Lever Handle

Allows you to carry a stylish design throughout your entire facility.

### Adjustable Handle Limit Stop

Limits the movement of the handle into the “hot” zone.

### DIAMOND™ Seal Technology

Utilizes a diamond-coated ceramic cartridge, built to last 10 times the industry standard.\* Once inside the faucet, water is not in contact with metal contaminants.

\*Industry standard based on ASME A112.18.1 of 500,000 cycles.

100LF-HDF





**Single-Lever Kitchen Faucet  
100LF-HDF**

- Vandal-resistant elbow handle and 1.5 gpm outlet
- 3-hole installation
- Adjustable handle limit stop
- Diamond-coated ceramic cartridge



**Single-Lever Kitchen Faucet  
101LF-HDF**

- Vandal-resistant elbow lever handle
- Adjustable handle limit stop
- Single-hole installation
- 1.5 gpm outlet
- Diamond-coated ceramic cartridge



**8" Deck Mount Single-Lever  
Kitchen Faucet  
400LF-HDF**

- Side sprayer
- Vandal-resistant elbow lever handle and 1.5 gpm outlet
- Adjustable handle limit stop
- 3-hole installation
- Diamond-coated ceramic cartridge



**Single-Lever Utility Faucet  
710LF-HDF**

- Vandal-resistant elbow handle
- Adjustable handle limit stop
- 10"-high rigid spout
- 1.5 gpm vandal-resistant outlet
- Diamond-coated ceramic cartridge



**Single-Lever Pantry Faucet  
27C643**

- Vandal-resistant lever handle
- CER-TECK® cartridge
- Rigid/swivel gooseneck spout; other types and sizes available





## TWO-HANDLE GENERAL SINK FAUCETS

### Seamless Brass Spout

Compared to traditional tubular spouts on the market, this spout boasts a .09" wall thickness, which provides superior force and vandal resistance.

### Water-Efficient Outlet

Available in four optional reduced flow outlets, ranging from 0.5 gpm to 1.5 gpm.

### Rigid/Swivel Gooseneck Spout

Optional brass collar is supplied to accommodate rigid or swivel installation needs. Limited swing also available.

### Cast Brass Body

Construction of this faucet offers little opportunity for bacteria to collect and makes cleaning easy.





**8" Cast Deck Mount Faucet**  
26C3942

- Vandal-resistant 4" hooded blade handles
- CER-TECK® cartridge
- 1.5 gpm outlet
- Rigid/swivel gooseneck spout



**Single Shank Mixing Faucet**  
25C3847

- Vandal-resistant 2-1/2" balanced lever handles
- CER-TECK cartridge
- 1.5 gpm outlet
- Rigid/swivel gooseneck spout



**8" Below Deck Mount Faucet**  
27C2923

- Vandal-resistant 1.5 gpm laminar with Agion® antimicrobial outlet
- Vandal-resistant 3" hooded lever handles
- CER-TECK cartridge
- Rigid/swivel gooseneck spout



**4" Cast Deck Mount Faucet**  
27C4844

- Vandal-resistant 4" blade handles
- CER-TECK cartridge
- 1.5 gpm outlet
- Rigid/swivel gooseneck spout



**4" Cast Deck Mount Faucet**  
27C5833

- Includes pop-up
- Vandal-resistant 1.5 gpm outlet and 3" hooded lever handles
- CER-TECK cartridge
- Rigid/swivel gooseneck spout



**8" Center Wall Mount Pre-Rinse Faucet**  
55C1513

- Includes auto shut-off
- Vandal-resistant 3" hooded lever handles
- Supplied with standard water/energy-saving sprayhead with a flow rate of 1.6 gpm
- CER-TECK cartridge
- Optional 1.2 gpm spray face included



## Four ADA Handle Options



1



- 4" Hooded Blade  
(Available with optional red/blue temperature indicator)

2



- 3" Hooded Lever  
(Available with optional red/blue temperature indicator)

3



- 4" Blade with Sanitary Hood  
(Available with optional red/blue temperature indicator—shown above)

4



- 6" Wrist  
with Sanitary Hood



## WALL MOUNT GENERAL SINK FAUCETS

### Wall Brace

Reinforces the faucet-to-wall connection and helps to support heavy pails of water.

### Body-Mounted Vacuum Breaker with Garden Hose End

The vacuum breaker prevents backflow of sinkwater into potable water system. The standard hose-end spout makes adding and removing garden hoses simple.

### Integral Checks

Eliminate crossflow—preventing the hot water from traveling to the cold side and vice versa.

### Integral Stops

Allow for ease of maintenance—no need to shut the entire water supply off when you can do it right at the faucet.







**8" Center Wall Mount Service Sink Faucet**  
28C2383

- Adjustable top/bottom brace
- Body-mounted angle vacuum breaker with garden-hose end
- Includes integral check stops
- Vandal-resistant 3" hooded lever handles
- CER-TECK® cartridge



**8" Center Wall Mount Service Sink Faucet**  
28C8073

- Spout end vacuum breaker with garden-hose end
- Includes 48" hose and stainless steel hanger
- Rough chrome-plated
- Includes integral check stops
- Vandal-resistant 3" hooded lever handles
- CER-TECK cartridge



**8" Center Wall Mount Sink Faucet**  
28C6932

- Includes integral check stops
- Vandal-resistant 1.5 gpm outlet and 4" hooded blade handles
- CER-TECK cartridge
- Rigid/swivel gooseneck spout



**8" Center Wall Mount Service Sink Faucet**  
28T9

- Includes integral stops
- ASSE-approved integral vacuum breaker with garden-hose end
- Metal cross handles
- Compression cartridge
- Rough chrome-plated



**8" Center Wall Mount Sink Faucet**  
28C4434

- Vandal-resistant 1.5 gpm outlet and 4" blade handles with sanitary hood
- CER-TECK cartridge
- 11" tubular swing spout



## BATH ACCESSORIES



### Grab Bars



1-1/2" x 24" Grab Bar  
40124-SS

- Stainless Steel finish
- For persons up to 500 pounds
- Concealed mounting
- Also available in lengths of 18", 30", 36", 42", and 48"



1-1/4" x 24" Grab Bar  
41124-SS

- Stainless Steel finish
- For persons up to 500 pounds
- Concealed mounting
- Also available in lengths of 18", 30", 36", and 42"



1-1/4" x 24" Grab Bar  
With Decorative Flange  
41224-SN

- Satin Nickel finish
- For persons up to 500 pounds
- Concealed mounting
- Also available in 18" length



## Bathroom



**24\"**

- Concealed mounting
- Mounting hardware included



**24\"**

- Concealed mounting
- Mounting hardware included



**1\"**

- Adjustable length
- Oval design prevents rotation
- Also available in 6' length



**Recessed Paper Holder  
with Plastic Roller  
45070-ST**

- Plastic spring-activated roller
- Twin side-by-side model available



**Recessed Extra Roll Paper Holder  
45470-ST**

- Plastic spring-activated roller
- Stores extra roll behind roll in use



**Twin Paper Holder  
45272**

- Two brass spring-activated rollers

## Public Washroom



**Recessed Towel Dispenser  
and Waste Receptacle  
45568-SS**

- Holds 475 multi-fold or 350 C-fold towels
- Removable 2-gallon waste receptacle
- Includes tumbler lock and key



**Vertical Liquid Soap Dispenser  
44080-SS**

- 40 oz. capacity
- Shut-off soap valve
- Mounting hardware included



**Toilet Seat Cover Cabinet  
49000-SS**

- 500 seat cover capacity
- Mounting hardware included



## MULTICHOICE® UNIVERSAL.



---

### EXCLUSIVE BENEFITS FROM MULTICHOICE UNIVERSAL

#### **Eliminates the Wrong Valve in the Wall.**

Now you don't have to worry about ordering and installing the wrong valve, no matter which tub/shower your customer chooses.

#### **Flexibility Throughout the Building Process.**

Changes to the shower can be made at any time in the building process without altering the behind-the-wall plumbing.

#### **Saves Time and Hassle.**

Streamlines the whole plumbing and product installation process.

#### **Temperature Accuracy.**

More refined temperature limit stop allows you to set temperatures more precisely.

#### Mounting Bracket

Provides a sturdy method to secure the valve to a stringer and prevents rocking.

#### Square Plasterguard

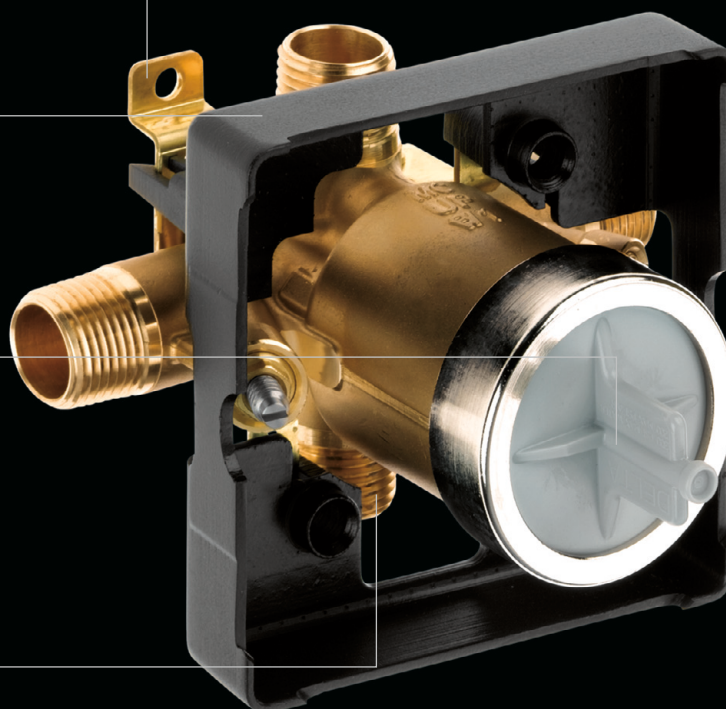
The size of a standard tile allows for simple 90° cuts. Snaps into place with no tools required to remove.

#### Heat-Resistant Pressure Test Cap

Allows for air or water testing before the valve cartridge is installed up to 300 psi. Easy access for flushing out the system.

#### Three Connection Types

Provides universal connection options for every type of piping—IPS, PEX and UNIVERSAL.



R10700-UNWS

## ONE ROUGH. UNLIMITED POSSIBILITIES.



#### R10300-UNWS MultiChoice Universal Valve Body with Push-Button Diverter

WS—with stops recommended for 'Commercial' applications.



#### Single-Function Pressure-Balanced Valve Cartridge

Functions with a single control for temperature only.



#### Dual-Function Thermostatic Valve Cartridge

Keeps water temperature consistent by actually measuring and monitoring the temperature of the water and automatically adjusting the water mix to maintain a more precise water temperature.



## TUB AND SHOWER

### Adjustable Showerhead

Allows users to select their preference between full, massage and combination settings.

### Diverter Valve

Makes it easy for the user to switch between the showerhead and handshower.

### MultiChoice® Universal

Provides unparalleled flexibility with multiple cartridge options.

### ADA Slide Bar

When installed according to spec, this stainless steel bar serves as both a slide bar and an ADA-compliant bar.

### Optional Double Spiral Hose

This 69" hose is ideal for commercial applications.



T13H322-20 R10700-UNWS



#### Add-On Options:

- Quick disconnect for hose
- Longer slide bar
- Adjustable volume control





**Tub and Shower**  
T13H283 – Trim  
R10000-UNWS – Rough-in

- MultiChoice® Universal pressure balance tub and shower
- H<sub>2</sub>Okinetic™ water-efficient showerhead—1.5 gpm
- Vandal-resistant lever blade handle
- Escutcheon with non-removable red/blue marking



**Shower**  
T13H123 – Trim  
R10000-UNWS – Rough-in

- MultiChoice Universal pressure balance shower
- Touch-Clean® 3-setting showerhead—2.0 gpm
- Vandal-resistant lever blade handle
- Escutcheon with non-removable red/blue marking



**Tub and Shower**  
T13H232 – Trim  
R10000-UNWS – Rough-in

- MultiChoice Universal pressure balance tub and shower
- Water-efficient 1.5 gpm showerhead
- Escutcheon with non-removable red/blue marking



**Shower**  
T17TH125 – Trim  
R10000-UNWS – Rough-in

- TempAssure® thermostatic shower
- Touch-Clean 3-setting 2.0 gpm showerhead
- Non-removable red/blue indicators
- Tub and shower trim models available



**Shower and Handshower with Grab/Slide Bar**  
T13H322-20 – Trim  
R10700-UNWS – Rough-in

- MultiChoice Universal pressure balance shower with diverter valve
- Touch-Clean 3-setting 2.0 gpm showerhead
- 1.5 gpm handshower with 24" stainless steel grab/slide bar with ADA adjustable slide
- 69" brass double spiral hose
- Water-efficient configuration available
- Escutcheon with non-removable red/blue marking
- Two check valves in handshower



**Handshower with Grab/Slide Bar**  
T17TH155 – Trim  
R10000-UNWS – Rough-in

- TempAssure thermostatic shower—2.5 gpm
- 24" stainless steel grab/slide bar with ADA adjustable slide
- Non-removable red/blue indicators
- Vandal-resistant lever handle
- Two check valves in handshower



**Tub and Shower**  
T13490 – Trim  
R10000-UNWS – Rough-in

- MultiChoice Universal pressure balance tub and shower
- Touch-Clean 2.0 gpm showerhead
- Red/blue indicators
- Vandal-resistant lever blade handle



**Push-Button Tub and Shower**  
T13691 – Trim  
R10300-UNWS – Rough-in

- MultiChoice Universal pressure balance tub and shower
- Touch-Clean 2.0 gpm showerhead
- Integral push-button diverter
- Non-removable red/blue indicator



**Push-Button Electronic Shower**  
860T167 – Hardwire  
861T167 – Battery

- Available with various mixing and showerhead options
- Field adjustable shower times
- Vandal-resistant 1.5 gpm showerhead



## SHOWERHEADS AND DRAINAGE



RP46384



3-Setting  
Touch-Clean®  
Showerhead  
RP43381

■ 2.0 gpm



Touch-Clean  
Showerhead  
RP38357

■ 2.0 gpm



Touch-Clean  
Showerhead  
061048A

■ 1.5 gpm



Touch-Clean  
Handshower  
061049A

■ 1.5 gpm

RP7405

■ 2.5 gpm  
■ Pause feature



Cast Lavatory Waste  
33T260-1

- Open grid strainer  
less overflow holes
- With overflow holes model  
available (33T260)
- Less overflow holes, with  
splash reduction drain  
cover (33T260-1DC)



Cast P Trap  
33T311 - 1-1/4"  
33T360 - 1-1/2"

■ With cleanout



Standard Brass  
Fixed Spray  
Showerhead  
060890A

■ 2.2 gpm  
■ Chrome



30° Vandal-Resistant  
Cast Wall Mount  
Showerhead  
060793A

■ 2.0 gpm  
■ Chrome



H2Okinetic™  
Water-Efficient  
Showerhead  
RP46384

■ 1.5 gpm



Cast Lavatory Waste  
33T290-1

- Offset open grid strainer  
less overflow holes
- With overflow holes model  
available (33T290)
- Less overflow holes, with  
splash reduction drain  
cover (33T290-1DC)



060710A

■ Arm and flange

060991A

■ 1.75 gpm

061011A

■ 1.5 gpm



THE INNOVATION DOESN'T END HERE.

**DELTA** COMMERCIAL  
see what Delta can do

Products Smart Solutions Support and Resources SpecSelect

WHERE TO BUY search

## Proximity™ Sensing Technology

watch video learn more more smart solutions

Proximity™ Sensing Technology is the next generation in responsive hands-free functionality. This revolutionary technology transforms the entire faucet into a sensor, automatically responding when approached.

**SpecSelect®**

**New Products**

**Responsible. Resourceful.**

**Project Categories**

Home | Company | News | Spec Binder | CEU Courses | Green at Delta | Project Categories | Case Studies | Contact Us

There's more to see on our websites: [deltacommercialfaucets.com](http://deltacommercialfaucets.com) and [specselect.com](http://specselect.com)

If you're looking for a particular faucet combination and you didn't see it in this catalog, check out our user-friendly websites for a comprehensive collection.

- Browse by project type, price range, or model number
- Check out product news
- View frequently asked questions and installation tips
- Find a Delta Faucet dealer

Everything you need to make your selection easier is right online at [deltacommercialfaucets.com](http://deltacommercialfaucets.com) and [specselect.com](http://specselect.com). If you have any additional questions, contact us at 800.345.DELTA.

Delta® Commercial Technical Service  
800.387.8277

**DELTA** COMMERCIAL **specselect**

Catalog Index Parts Commercial Site

Welcome to SpecSelect®

This state-of-the-art tool delivers exact, specific, and instantaneous information for sourcing commercial products. Explore over 40,000 models for all your project needs whether renovating a healthcare facility, designing a hotel, or specifying a new setting, you won't find a more comprehensive online catalogue than SpecSelect®.

Catalog Index Parts Commercial Site

Site Requirements | Contact Webmaster | Question Edition | Features | Privacy Statement | About SpecSelect | Contact Information

Copyright 2010 Delta Faucet Company





Delta® is committed to sustainability and providing smart water delivery solutions that maximize water savings without sacrificing comfort and convenience. Our commitment to sustainability extends to waste reduction and the preservation of natural resources and the environment. That's why we choose to print on Forest Stewardship Council (FSC) certified paper.



A MASCO COMPANY

Delta Faucet Company  
55 E. 111th St., P.O. Box 40980  
Indianapolis, IN 46280

Masco Canada Limited  
350 S. Edgeware Rd.  
St. Thomas, Ontario N5P 4L1

deltafaucet.com  
800.345.DELTA (3358)

Delta Commercial Technical Service  
800.387.8277

©2012 Masco Corporation of Indiana  
DL-1759 07/12